

ITEM 01- AGASALHOS TACTEL



ITEM 02 - BOLSA COM ALÇA



ITEM 03 E ITEM 07 (COLETE E BONÉ ZONA AZUL)



ITEM 04- BONÉ EM TACTEL



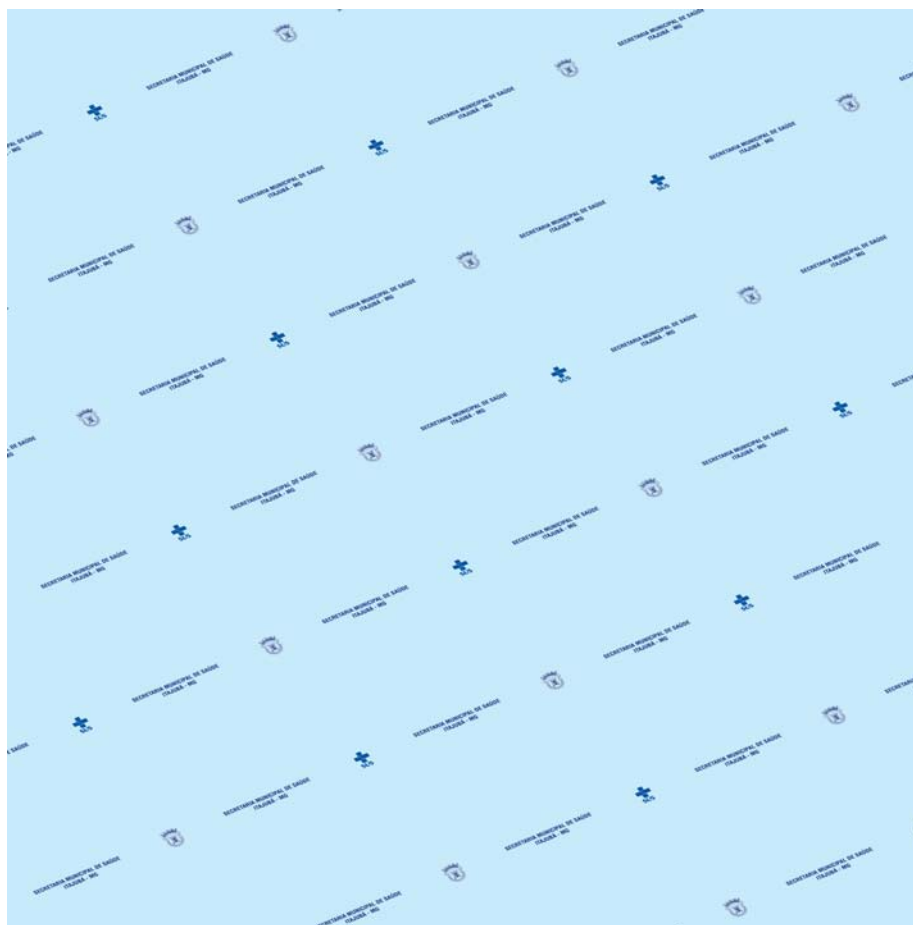
ITEM 05 – CAMISETA MALHA



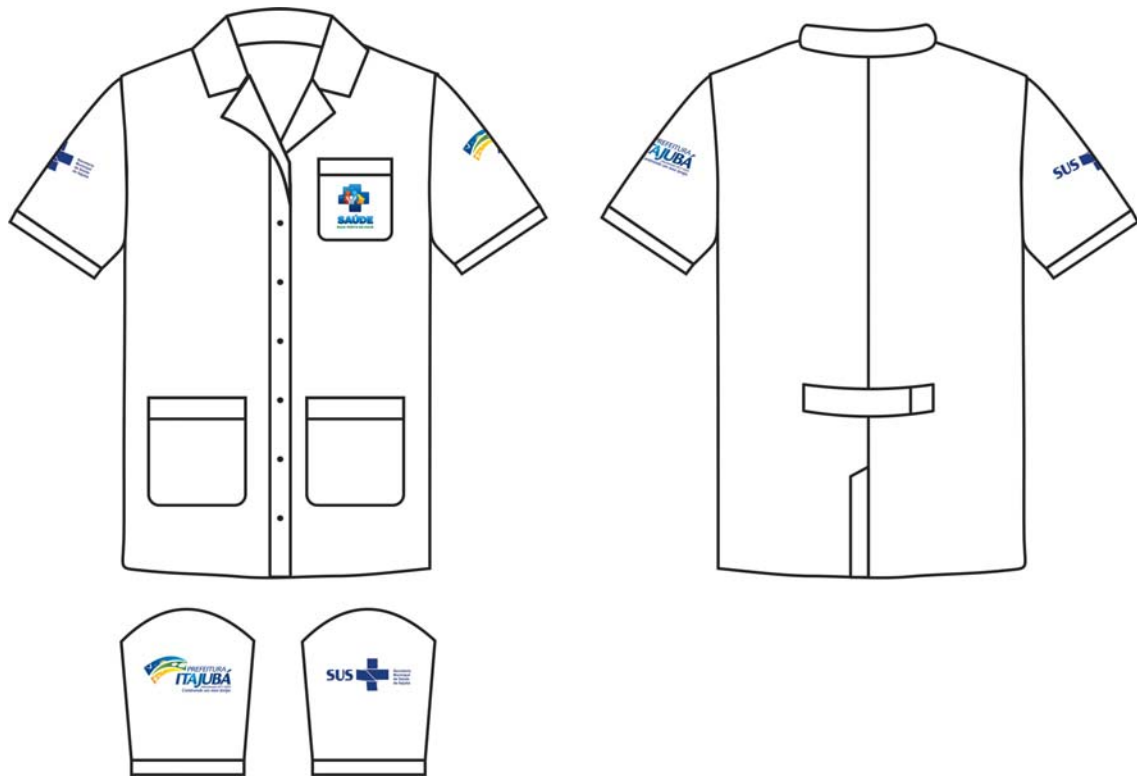
ITEM 06 - CAMISOLA PACIENTE



# ITEM 08 - FRONHA

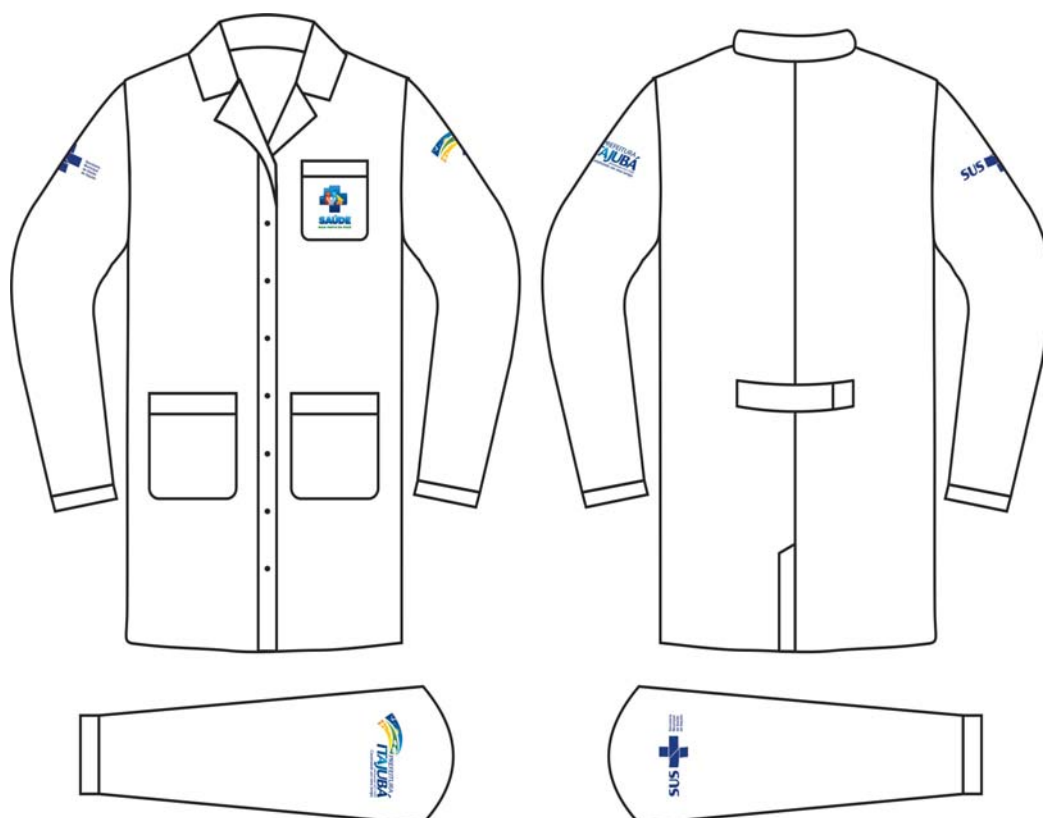


ITEM 09 - JALECO 100% ALGODÃO,

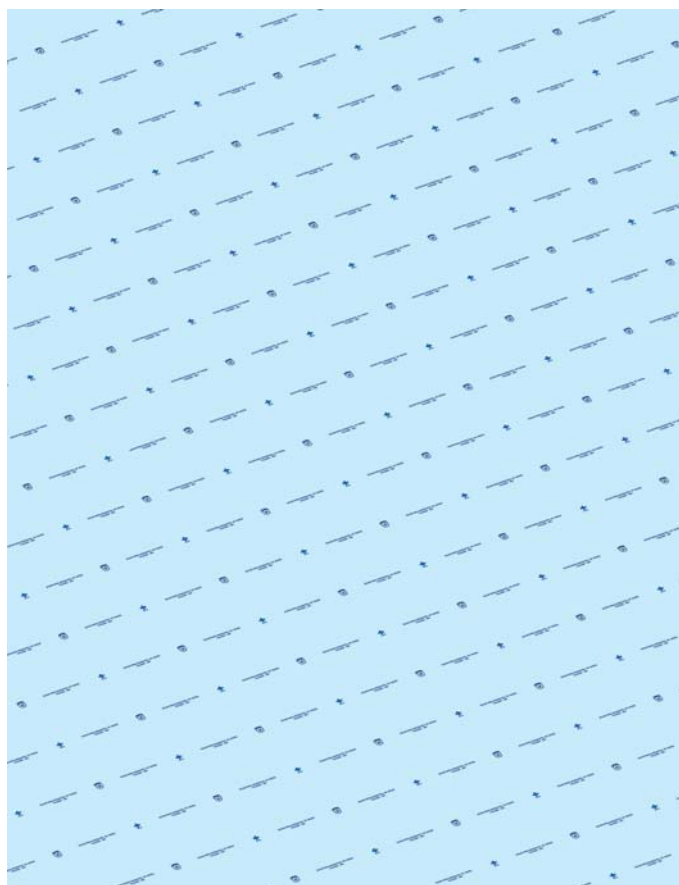


ITEM 10 E ITEM 11

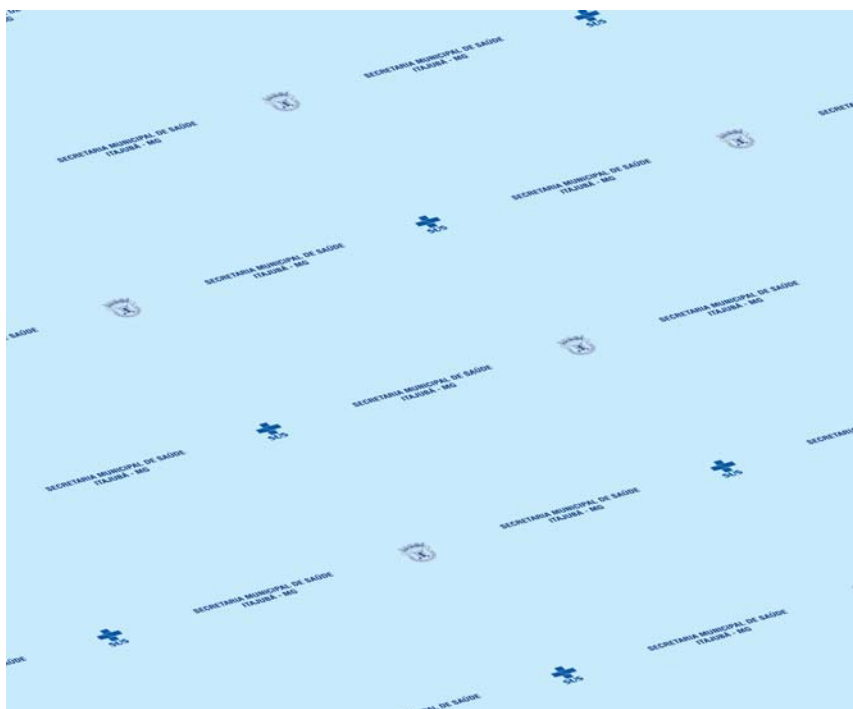
(JALECO FEMININO 100% ALGODÃO/JALECO MASCULINO 100% ALGODÃO)



## ITEM 12 – LENÇOL



## ITEM 13 – TOALHA DE BANHO



## ITEM 15 – TOALHA DE ROSTO

